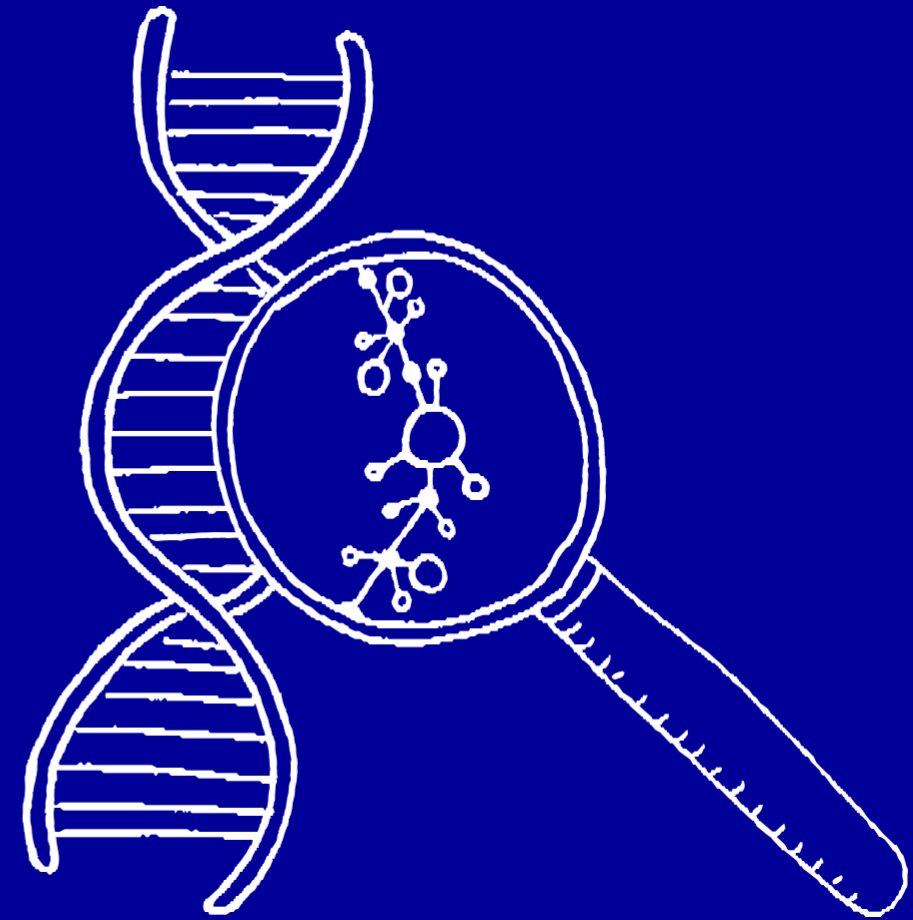


Evotec Gene Therapy

Adding value to our partners' research





Disclaimer

This presentation (including any information which has been or may be supplied in writing or orally in connection herewith or in connection with any further inquiries) is being delivered on behalf of Evotec SE (the “Company”, “we,” “our” or “us”). This presentation is made pursuant to Section 5(d) and/or Rule 163B of the Securities Act of 1933, as amended, and is intended solely for investors that are qualified institutional buyers or certain institutional accredited investors solely for the purposes of familiarizing such investors with the Company. This presentation shall not constitute an offer to sell or the solicitation of an offer to buy Evotec securities, nor shall there be any sale of these securities in any state or jurisdiction in which such offer, solicitation or sale would be unlawful prior to registration or qualification under the securities laws of any such state or jurisdiction. No representations or warranties, express or implied, are made as to the accuracy or completeness of the statements, estimates, projections or assumptions contained in the presentation, and neither the Company nor any of its directors, officers, employees, affiliates, agents, advisors or representatives shall have any liability relating thereto.

Cautionary Note Regarding Forward-Looking Statements

This presentation contains forward-looking statements concerning our business, operations and financial performance and condition, as well as our plans, objectives and expectations for our business operations and financial performance and condition. Many of the forward-looking statements contained in this presentation can be identified by the use of forward-looking words such as “anticipate,” “believe,” “could,” “estimate,” “expect,” “intend,” “may,” “might,” “plan,” “potential,” “should,” “target,” “would” and other similar expressions that are predictions of or indicate future events and future trends, although not all forward-looking statements contain these identifying words. Forward-looking statements are based on our management’s beliefs and assumptions and on information currently available to our management. Such statements are subject to risks and uncertainties, and actual results may differ materially from those expressed or implied in the forward-looking statements due to a variety of factors. The forward-looking statements contained in this presentation speak only as of the date of this presentation, and unless otherwise required by law, we do not undertake any obligation to update them in light of new information or future developments or to release publicly any revisions to these statements in order to reflect later events or circumstances or to reflect the occurrence of unanticipated events.



Evotec GT¹ – Adding value to our partners' research

Innovative and flexible solutions from target identification to clinical candidates

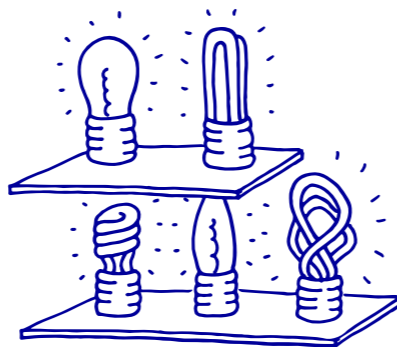
The people

- Outstanding scientists
- Strong experience in gene therapy and drug development for rare diseases
- Poised to progress pipeline assets into clinic



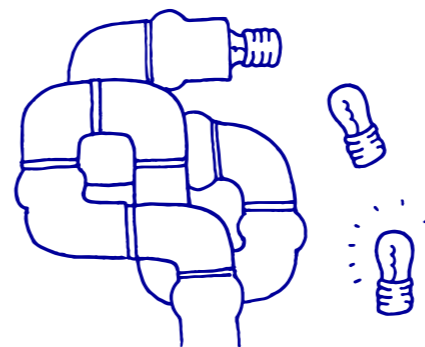
Therapeutic area expertise

- Team leverages therapeutic area insights from years of industry experience and across Evotec



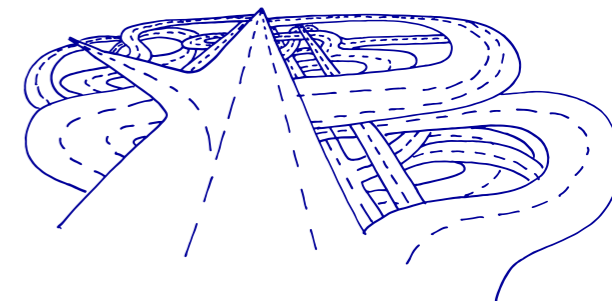
Integrated drug discovery & development

- State-of-the-art capabilities
- Best-in-class technology platforms



Flexible deal structures

- Integrated collaborations and stand-alone services



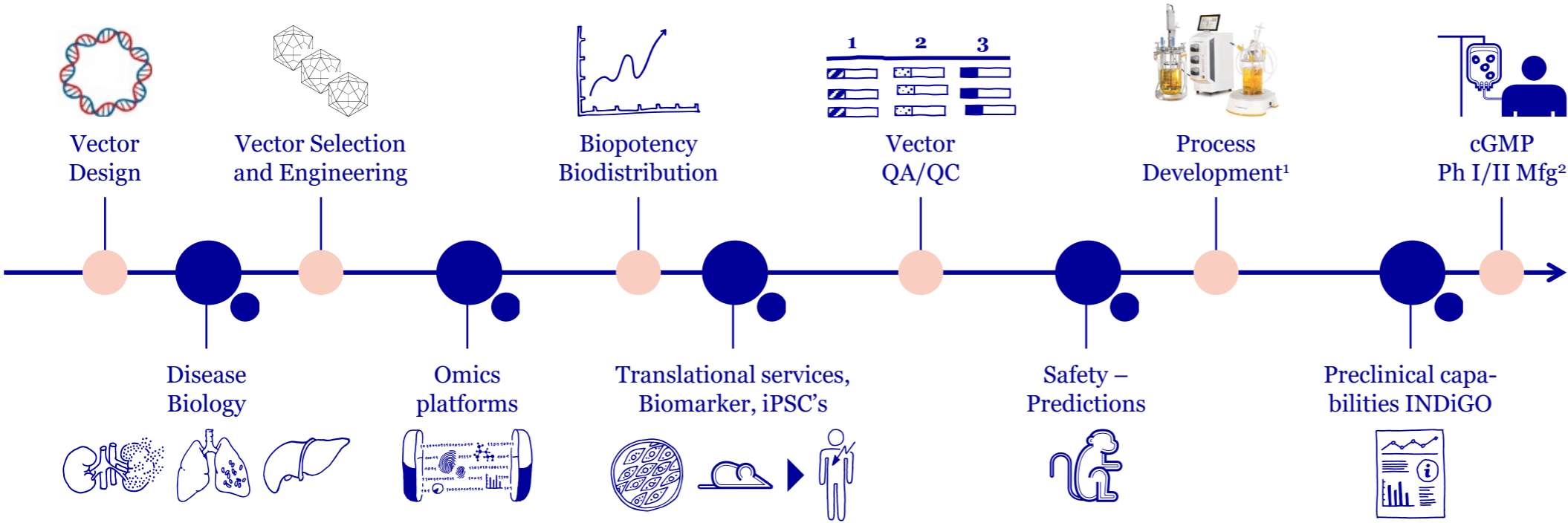
A gene therapy platform combined with world-class drug discovery & development expertise to accelerate and maximize our partners' success



Early de-risking through addressing the translational gap

Unlocking the promise of gene therapy

Traditional GT services



Augmented EVT-GT services

„Competitive gene therapy development proposition, from program discovery up to entry into the clinic“

Standard viral in vivo gene therapy development technologies are strongly augmented by readily available, highly innovative, in-house capabilities

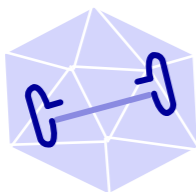


***In vitro* Sciences**

Full bandwidth of vector design and characterizations

Vector design

- Payload
 - Transgenes
 - Antisense approaches (e.g. shRNA, miRNA)
 - Vectorized antibodies
- Codon-optimization
- Capsids
 - Natural serotypes
 - Engineered capsids
- Genome editing
- Non-viral GT



Vector production

- Lab scale transfection & vector harvest
 - 1 to 5L benchtop bioreactor transfections
- Chromatography Systems (Äkta platform)
 - Affinity chromatography
 - Ion exchange chromatography
- Ultracentrifugation
- TFF



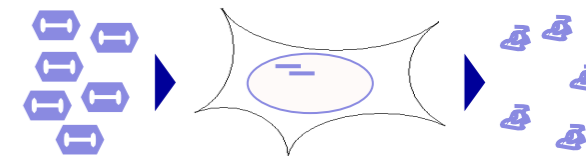
Vector characterization

- Vector quantification
 - Real time qPCR, ddPCR
 - Fluorometry
 - ELISA capsid protein
- Vector integrity
 - Agarose gel
 - DNA Sequencing
 - SDS-PAGE and Immunoblot
- Full to empty capsid particle ratio



Functional assays

- Cell-based assays
 - Celigo S – analysis platform
 - FACS analysis and (single) cell sorting
- Transgene expression assays
- Biopotency assays
 - Enzymatic assays
 - Functional ELISA and other biochemical assays



We cover within Evotec the entire value chain of preclinical drug discovery and development, from early discovery to lead candidate identification and preclinical development candidate characterization

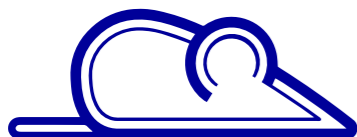


Non-Clinical Sciences

We cover a broad range of preclinical work under one roof with clear line of sight

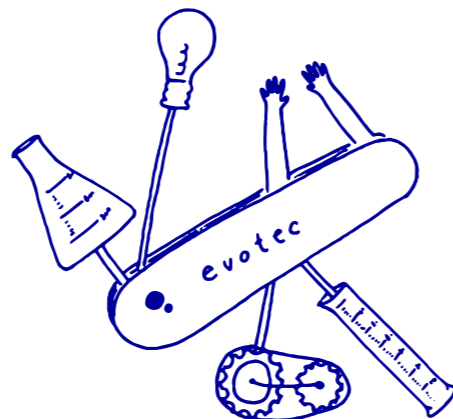
Discovery Sciences

- Target biology / pathway: *in vivo* proof of concept studies
- Available mouse models or customized disease models
- On-site capacity: 5,000 rodents (IVC housed); AAALAC



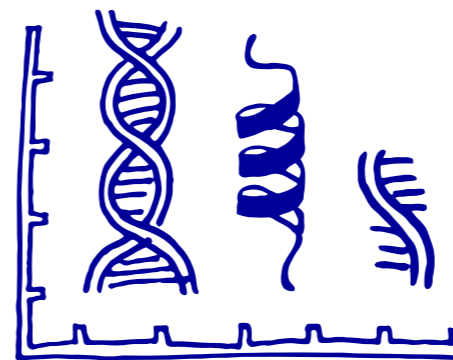
GT Pharmacology

- Biopotency and pharmacodynamic readouts
- Translational pharmacology
- Immunohistochemistry and histology
- Small and large animal species



Biodistribution / Safety

- Vector biodistribution to target and off-target organs
- *In vivo* imaging
- Combined pharmacology and safety studies
- Safety & Efficacy Biomarker ID



Seamless Road to Clinic

- Vector shedding study
- Immunogenicity assessment
- IND-enabling Pharm / Tox packages
- *In vivo* biopotency screening of gene therapy candidates

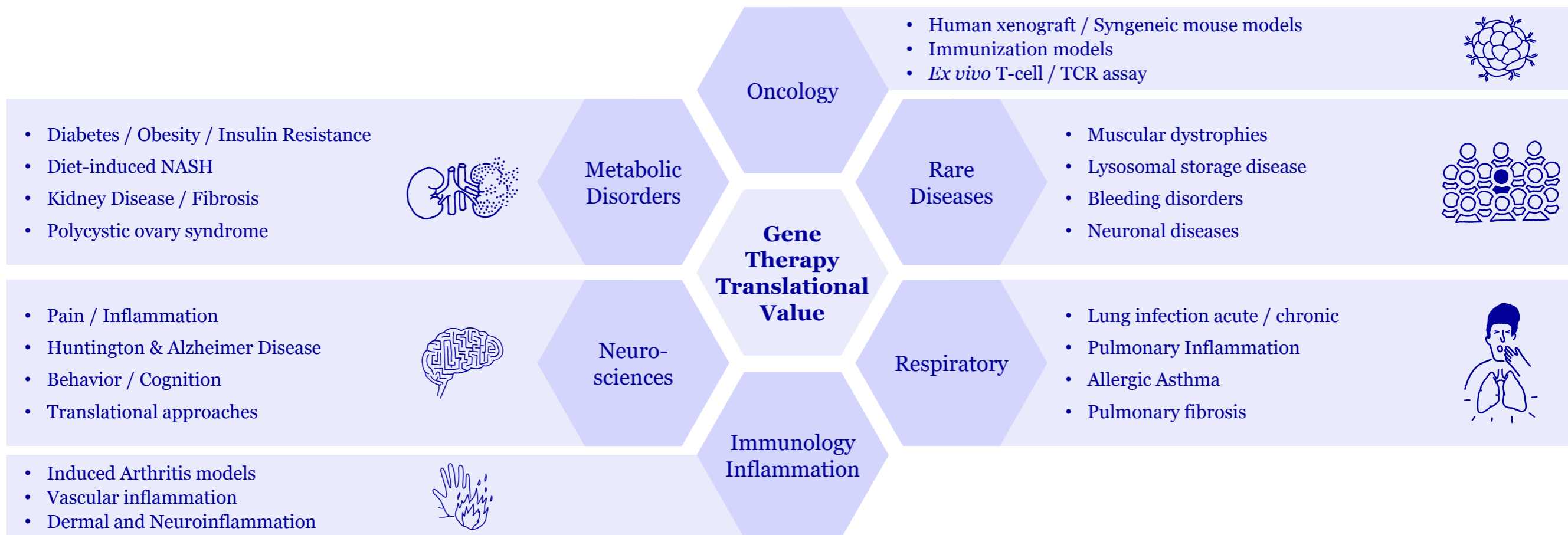


We integrate a multitude of complementary best-in-class technology platforms within Evotec's scientific network such as large animal models, biomarker discovery, single nuclei RNA sequencing and Evotec's computational bioinformatic powerhouse.



Gene therapy – Translational Sciences

We offer unique synergies with therapeutic area expertise at Evotec



Broad translational sciences & pre-clinical expertise in multiple disease areas

*Business Development
114 Innovation Drive,
Milton Park, Abingdon
Oxfordshire OX14 4RZ, UK*

*T: +44.(0)1235.86 15 61
F: +44.(0)1235.86 31 39
info@evotec.com*
