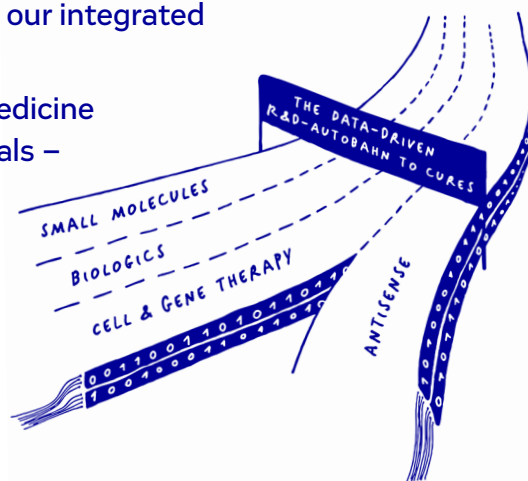
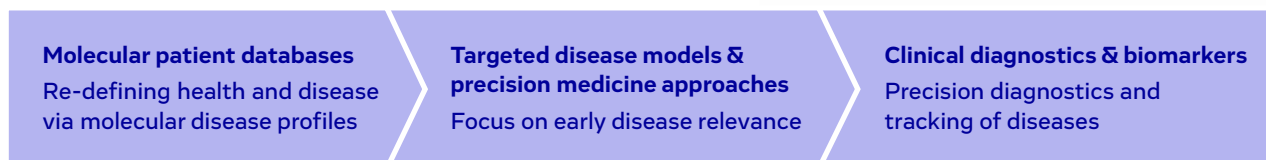





Join our Long-Term Vision for Metabolic and Kidney Diseases

- ▶ One of the world's most comprehensive molecular patient database for chronic kidney disease
- ▶ Top-level PanOmics platforms for patient-derived targets and biomarker identification
- ▶ Human iPSC- and innovative assay cascades propel our integrated drug discovery programs
- ▶ Select your preferred modality from our precision medicine platforms: small molecules – biologics – bi-functionals – cell & gene therapy – antisense
- ▶ Evotec welcomes opportunities to support and develop promising metabolic diseases projects; existing internal discovery assets are open to partnering and joint progression



Precision medicine is the only path to improved medicine:
Leading AI/ML driven drug discovery & development platforms



<p>EVOpanOmics </p>	<ul style="list-style-type: none"> ▶ Transcriptomics and proteomics data at industrial scale ▶ Multiple patient-derived data bases, e.g. CKD database (>10,000 patients; >600 billion data points)
<p>EVOpanHunter </p>	<ul style="list-style-type: none"> ▶ User friendly AI/ML driven multi-omics analysis platform ▶ Exceeding industry standards in predicting drug safety (e.g.: liver injury 86% vs. 70%)
<p>E.iPSC DRUG DISCOVERY </p>	<ul style="list-style-type: none"> ▶ One of the largest and most sophisticated iPSC platforms for drug discovery in industry ▶ First iPSC-derived drug candidate in clinic, large pipeline evolving in drug discovery and cell therapy ▶ Human iPSC-based models for retinal and kidney ciliopathies



-
- ▶ With more than 600 million chronic kidney disease (CKD) patients worldwide, CKD remains an area of high-unmet medical need and no curative or disease-modifying therapies are currently available. It is a global epidemic, signified through high prevalence and high cost of management. The various natures and complexities of kidney disease etiologies and the slow pace of drug approvals based on New Chemical Entities (NCEs) call for innovative and game-changing approaches to CKD discovery.
 - ▶ Evotec is at the forefront of kidney research and discovery and aims to address the challenges facing the CKD community. Our capabilities and unique network of alliances and collaborations are boosting development of first-in-class novel therapies for immune-, fibrotic-, monogenic- and diabetic kidney diseases.

Evotec's footprint in metabolic and kidney diseases

Alliances & collaborations

- 2012** Evotec and Harvard University expand strategic alliance in kidney diseases
- 2013** Evotec enters integrated discovery alliance with AstraZeneca in kidney diseases
- 2015** Evotec and Pfizer research collaboration on multi-organ fibrosis
- 2016** Evotec and Bayer partner to develop innovative treatments for kidney diseases
- 2017** Evotec joins NURTuRE consortium to mine unique kidney patient biobank
- 2017** Evotec joins forces with academic leaders to build NEPLEX and accelerate drug discovery in kidney diseases
- 2019** Evotec and Vifor Pharma form a joint venture for early development in nephrology
- 2020** Evotec and Novo Nordisk form strategic alliance to progress kidney therapies
- 2020** Evotec expands its proprietary patient database into liver disease with unique access to QUOD biobank
- 2021** Evotec and Chinook form a joint drug discovery alliance
- 2021** Evotec acquires right to GCKD kidney disease cohort of ~5,000 patients (German CKD)
- 2022** Evotec and Eli Lilly enter a joint discovery collaboration on metabolic diseases with a focus on kidney diseases and diabetes

*Our long-term vision in metabolic disease:
From bedside to bench and back to bedside*