

# From Patient to Patient

Precision drug discovery  
as a game changer for  
future medicines



## Evotec company profile

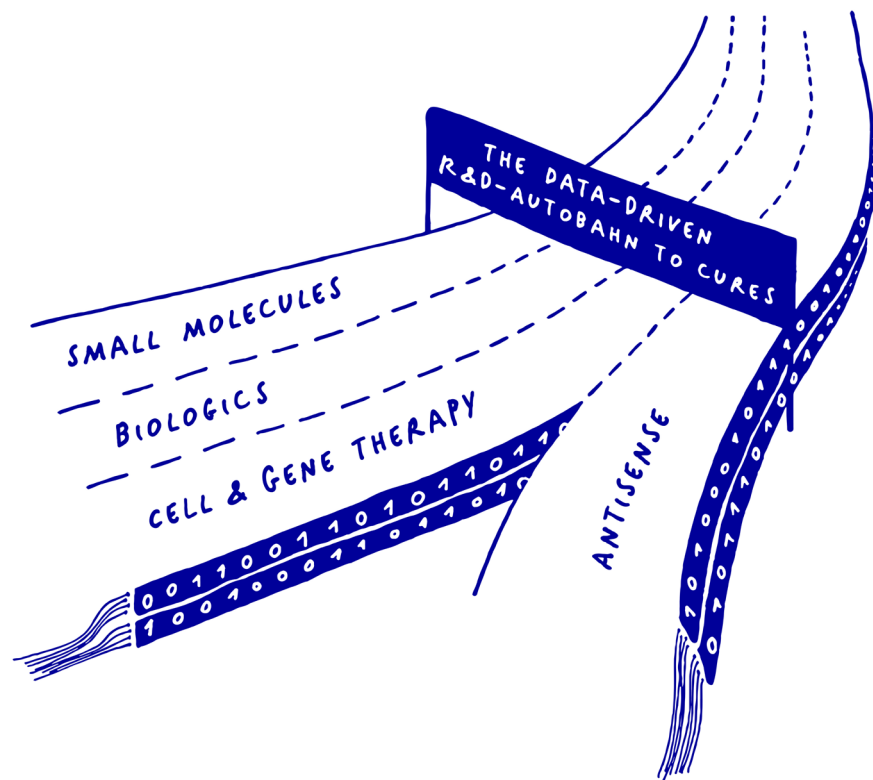
Evotec is a life science company with a unique business model focused on delivering highly effective new therapeutics to the patients. The Company leverages its multimodality platform, the “Data-driven R&D Autobahn to Cures”, for proprietary projects and within a network of partners including Pharma, Biotech, academics, and other healthcare stakeholders.

With more than 4,400 people at 16 sites, Evotec aims to create the world-leading co-owned pipeline for innovative therapeutics.

Evotec’s mission is to discover medicines for difficult to treat diseases in highly efficient collaborations and focus on data-driven precision medicine and early disease relevance to improve probabilities of success.

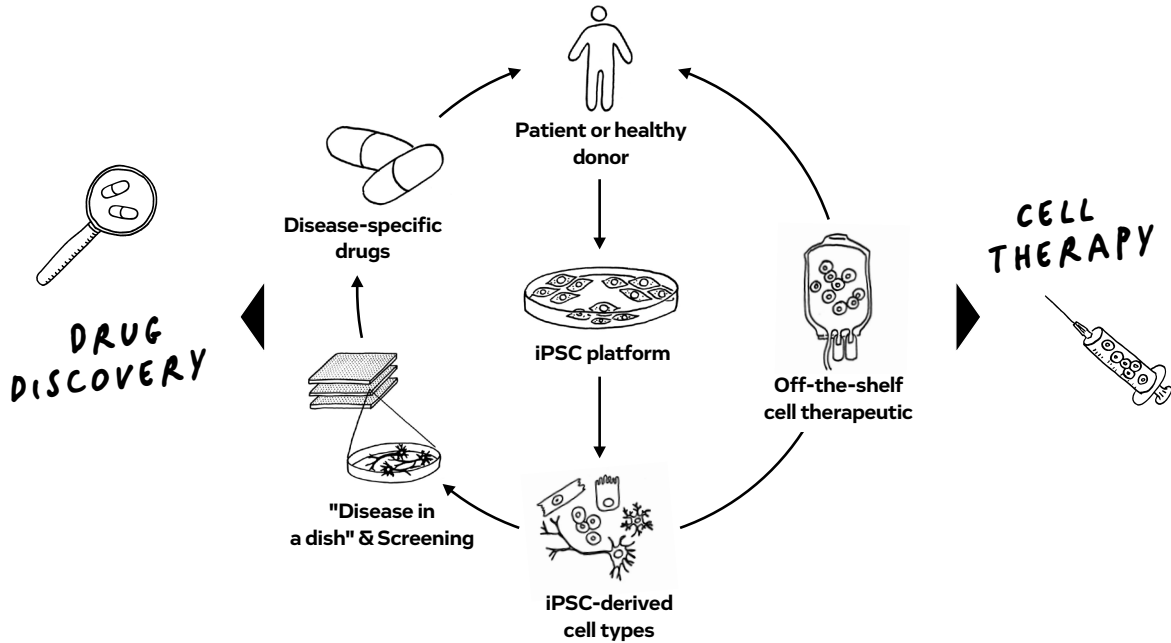
## Our key therapeutic areas

- ▶ Age-related diseases
- ▶ Infectious diseases
- ▶ Cardiovascular diseases
- ▶ Immunology & Inflammation
- ▶ Kidney diseases
- ▶ Metabolic diseases and complications
- ▶ Neurosciences
- ▶ Oncology
- ▶ Rare diseases
- ▶ Respiratory diseases
- ▶ Womens' health





## Evotec's world-leading iPSC platform – a holistic approach to identifying new therapeutic options



## Industrializing iPSC drug discovery in terms of throughput, reproducibility and robustness to reach highest standards

### In-house iPSC bank

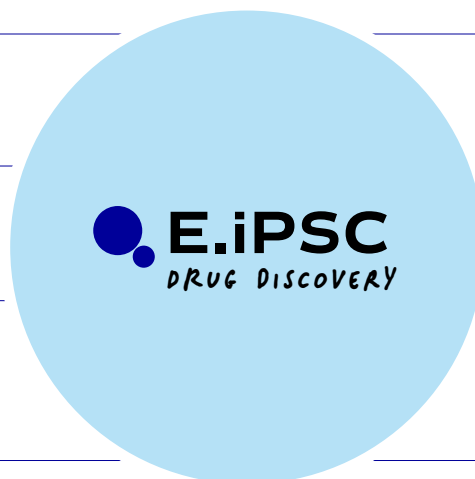
>350 patient lines  
Reprogramming & CRISPR gene editing

### Large scale production

Optimized protocols in 2D & 3D  
>500 HTS plates per month

### Strict quality control

High quality iPSC and  
iPSC-derived cells  
Low inter/intra plate variability



### High throughput screening

Diverse human disease models  
> 1 MIO compounds screened per annum

### Automation

Upscaling for HTS  
Custom made operating software

### Drug discovery projects

>20 different programs  
1st IND in clinical development  
since 2021

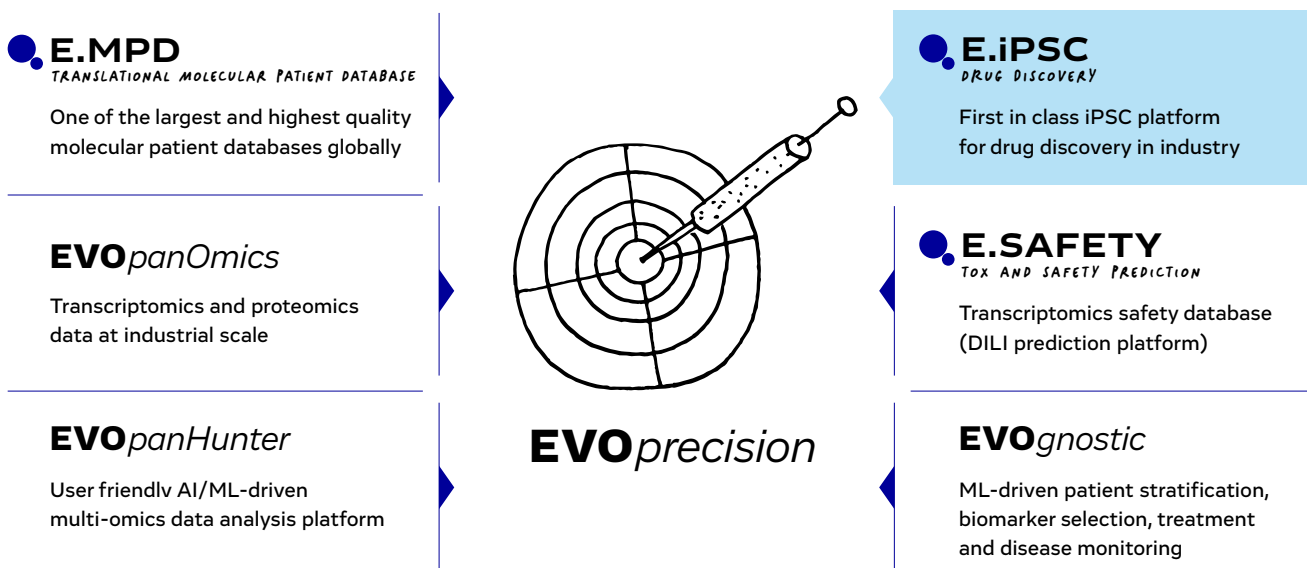


## Patient data-driven iPSC drug discovery enabling the power of precision medicine

Development of effective therapeutics has historically been challenging due to a limited understanding of disease pathology and a lack of accurate model systems in which to investigate disease etiology. iPSC technology has since revolutionized the way drug discovery is performed. With their ability to recapitulate aspects of disease pathophysiology, iPSC clearly provide a more physiological and scalable system for high throughput drug discovery. Similarly, computational analyses of

multiomics patient data can transform drug discovery by shedding light on biological complexity and providing a deeper molecular understanding of the disease. Combining both technologies through precision medicine approaches holds unique opportunities to identify novel targets and better predict safety and efficacy of novel drug candidates, which serves as the critical path to more effective and affordable medicines in the future.

## Evotec's approach to precision medicine – realized through multiple technology platforms



## Partnering opportunities

We are open to partnerships and strategic collaborations across technologies and disease areas.

## Contact us

Matthias Renz  
VP, Innovate Strategic Initiatives  
+49 (0) 160 3670 912  
matthias.renz@evotec.com